

I20 E-Bike System

Automatic 2spd IGH E-Motor with Torque Sensor



IMA2
Rear Hub Motor



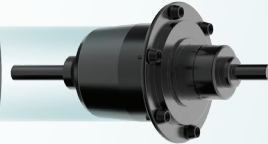
IMA2K
Disc



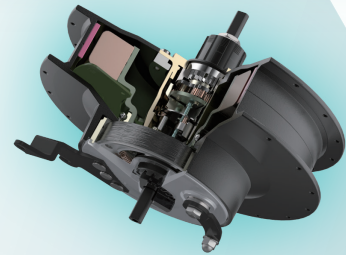
IMA2D
Drum Brake
110mm



IMA2
Motor
250W (36V/48V)
500W (48V)



A2
Automatic 2spd Gear Hub
with built-in Torque Sensor



CHA200
Battery Charger



BTI103
Battery

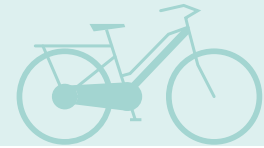


RMI20
Remote



DMI20
Display Monitor

I20 E-Bike System



DSI20
Display
Monitor

LCD Display
Assistance: Sport / Tour / Eco
Battery: % / status
Speed: Current / Average / Max
Range / Trip / ODO
kph / mph
Walk Mode
Lock Mode
Light Mode
BLE Mode
USB Mode



RMI20
Remote

with built-in USB charging port
5V, 0.5A



BTI103.BSS0
Battery

Inner Tube Battery with built-in motor controller
48V, 504Wh
Lithium-ion 21700 cells (Samsung / LG)
CANBUS 2.0B / BLE 5.0
Torque & Speed sensing control
Front & Rear Lights and Speaker support ready
3.3kg



IMA2K / IMA2D
Rear Motor

Automatic 2spd IGH E-Motor with Torque Sensor
2spd IGH with 137% or 153% gear range
Automatic gear shifting at 18kph
Magnetoelastic Torque Sensor with 0~100Nm range
(K) Disc Brake or (D) 110mm Drum Brake
Direct-drive hub motor
250W (36V/48V) with 40Nm or 500W (48V) with 50Nm
25kph or 32kph (20mph)



CHA200
Battery
Charger

Smart charger - communication with battery BMS
CANBUS
100-240V input
173W max output
3 hours charging for 0%~100% (504Wh)
1.5 hours charging for 50%~100% (504Wh)
(C) C-Type Plug / (A) A-Type Plug
600g